



**REGIONAL SPECIALISED METEOROLOGICAL CENTRE-TROPICAL CYCLONES, NEW DELHI
TROPICAL WEATHER OUTLOOK**

DEMS-RSMC TROPICAL CYCLONES NEW DELHI DATED 15.11.2024

TROPICAL WEATHER OUTLOOK FOR THE NORTH INDIAN OCEAN (THE BAY OF BENGAL AND THE ARABIAN SEA) VALID FOR THE NEXT 168 HOURS ISSUED AT 0600 UTC OF 15.11.2024 BASED ON 0300 UTC OF 15.11.2024.

BAY OF BENGAL:

Yesterday's cyclonic circulation over south Tamil Nadu & neighbourhood now lies over Gulf of Mannar & adjoining Sri Lanka coast and extends upto 1.5 km above mean sea level marked at 0300 UTC of today, the 15th November,2024.

Scattered to broken low and medium clouds with embedded intense to very intense convection lay over north Andaman Sea. Scattered low and medium clouds with embedded moderate to intense convection lay over westcentral & south Bay of Bengal and south Andaman Sea.

***PROBABILITY OF CYCLOGENESIS (FORMATION OF DEPRESSION) DURING NEXT 168 HRS:**

24 HOURS	24-48 HOURS	48-72 HOURS	72-96 HOURS	96-120 HOURS	120-144 HOURS	144-168 HOURS
NIL	NIL	NIL	NIL	NIL	NIL	NIL

***NOTE: EVERY 24HR FORECAST IS VALID UPTO 0300 UTC (0830 IST) OF NEXT DAY**

ARABIAN SEA:

Yesterday's cyclonic circulation over Lakshadweep and adjoining southeast Arabian Sea extending upto 3.1 km above mean sea level has become less marked at 0300 UTC of today, the 15th November,2024.

Scattered low and medium clouds with embedded isolated intense to very intense convection lay over central & south Arabian Sea, Comorin area off Kerala coast and Maldives area.

***PROBABILITY OF CYCLOGENESIS (FORMATION OF DEPRESSION) DURING NEXT 168 HRS:**

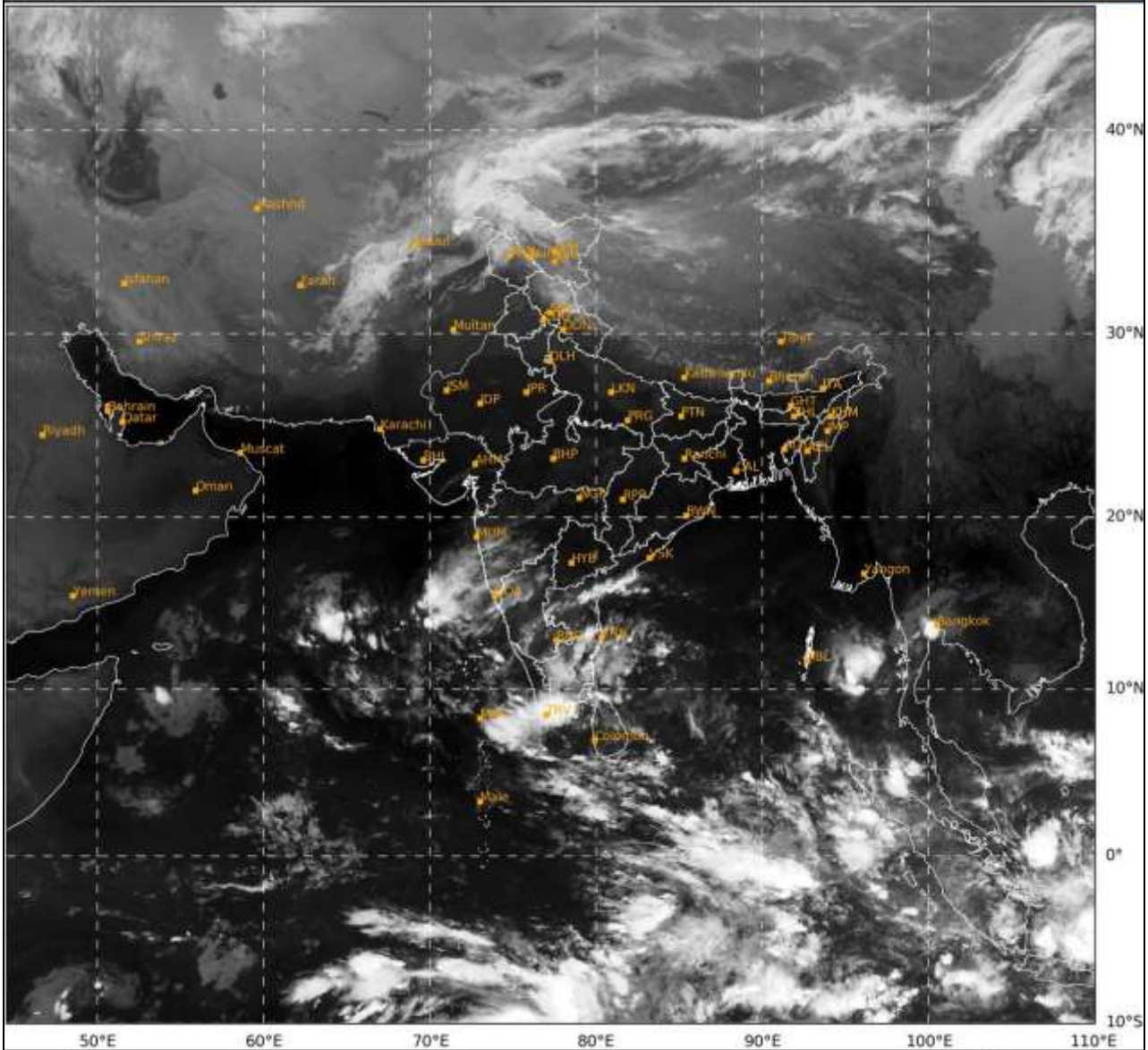
24 HOURS	24-48 HOURS	48-72 HOURS	72-96 HOURS	96-120 HOURS	120-144 HOURS	144-168 HOURS
NIL	NIL	NIL	NIL	NIL	NIL	NIL

***NOTE: EVERY 24HR FORECAST IS VALID UPTO 0300 UTC (0830 IST) OF NEXT DAY**

REMARKS: NIL.

SAT : INSAT-3DR IMG
IMG_TIRI 10.8 um
LIC Mercator

15-11-2024/(0315 to 0342) GMT
15-11-2024/(0845 to 0912) IST



440

943

IMD, DELHI

Cloud distribution: (a) Isolated: <25%, Scattered:25-50%, Broken: 51-75%, Solid:>75%, Convection Intensity: (a) Weak: Cloud Top Temperature (CTT) >-25°C, (b) Moderate: CTT: - 25°C to -40°C, (c) Intense: CTT: - 41°C to -70°C and (d) Very Intense: : Less than -70°C
PROBABILITY OF CYCLOGENESIS (FORMATION OF DEPRESSION):NIL: 0%, LOW: 1-33%, , MODERATE: 34-66% AND HIGH: 67-100%
This is a guidance Bulletin for WMO/ESCAP Panel Member countries. Visit respective National websites for Country specific Bulletins